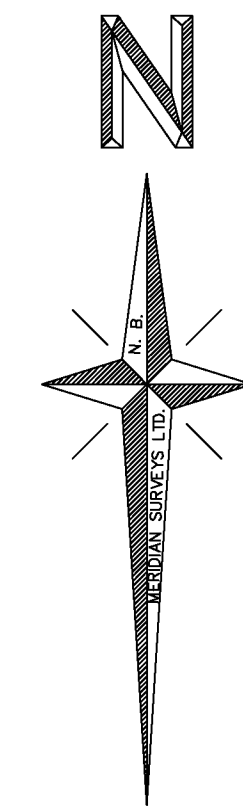


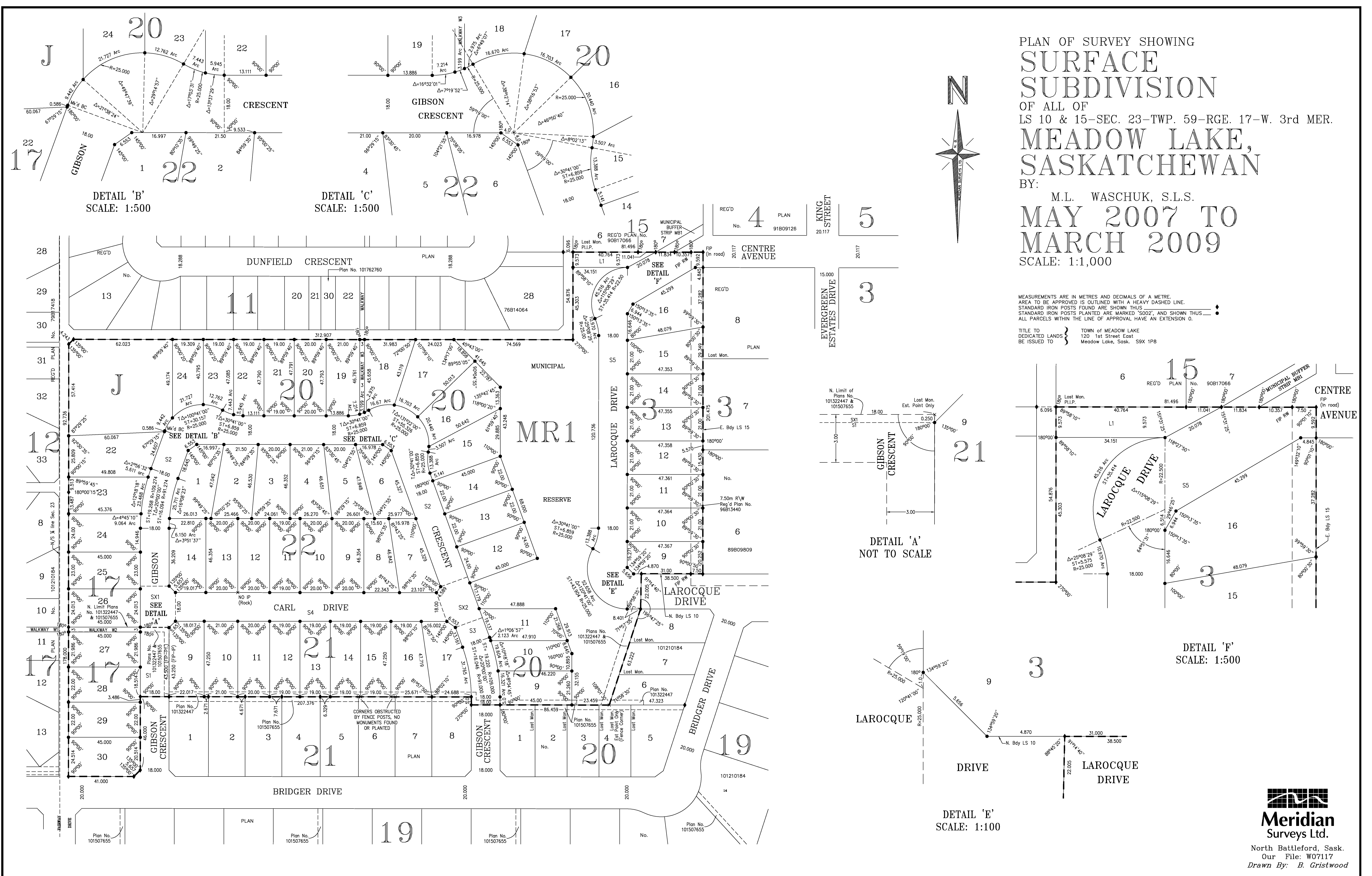
# PLAN OF SURVEY SHOWING SURFACE SUBDIVISION OF ALL OF LS 10 & 15-SEC. 23-TWP. 59-RGE. 17-W. 3rd MER. MEADOW LAKE, SASKATCHEWAN

BY:  
M.L. WASCHUK, S.L.S.  
**MAY 2007 TO  
MARCH 2009**  
SCALE: 1:1,000



MEASUREMENTS ARE IN METRES AND DECIMALS OF A METRE.  
AREA TO BE APPROVED IS OUTLINED WITH A HEAVY DASHED LINE.  
STANDARD IRON POSTS FOUND ARE SHOWN THIS .  
ALL PARCELS WITHIN THE LINE OF APPROVAL HAVE AN EXTENSION O.

TITLE TO DEDICATED LANDS } TOWN of MEADOW LAKE  
BE ISSUED TO } 120 1st Street East  
Meadow Lake, Sask. S9X 1P8



DETAIL 'B'  
SCALE: 1:500

DETAIL 'C'  
SCALE: 1:500

DETAIL 'A'  
NOT TO SCALE

DETAIL 'F'  
SCALE: 1:500

DETAIL 'E'  
SCALE: 1:100



**Meridian  
Surveys Ltd.**  
North Battleford, Sask.  
Our File: W07117  
Drawn By: B. Gristwood