

MEADOW LAKE FIRE DEPARTMENT

Annual Report For 2017



Introduction

It is my pleasure to submit the City of Meadow Lake Fire Department's Annual Report for the year of 2017. The following pages are a summary of the fire department's activities and statistics of the last year.

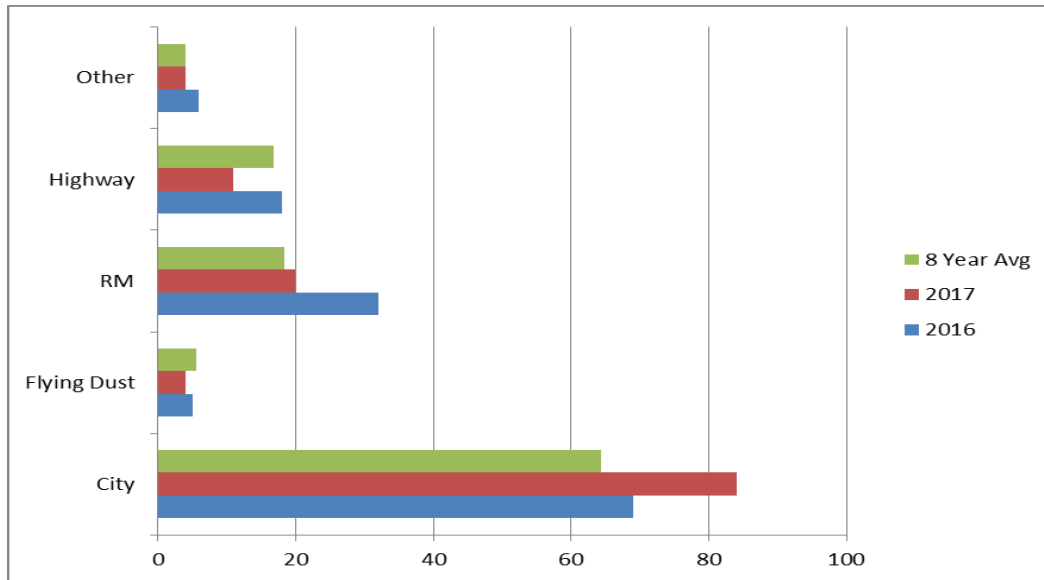
The fire service is constantly changing. The range of hazards and potential scenarios that we must be prepared for is constantly growing, and includes new materials and technology as well as better research and understanding of existing risks. On the other hand, opportunities abound for innovation and improvement. We hope provide the best possible service to the citizens of Meadow Lake and our wider response area. With the continued support of the community, we will do just that.

Incident Summary

The Fire Department responds to emergencies within the City of Meadow Lake, the RM of Meadow Lake, Flying Dust First Nation, Dorintosh and parts of the Meadow Lake Provincial Park. We respond to rescue calls for a slightly larger area, along provincial highways and provincial forest areas.

The number of responses to each of these locations is as follows for the last eight years.

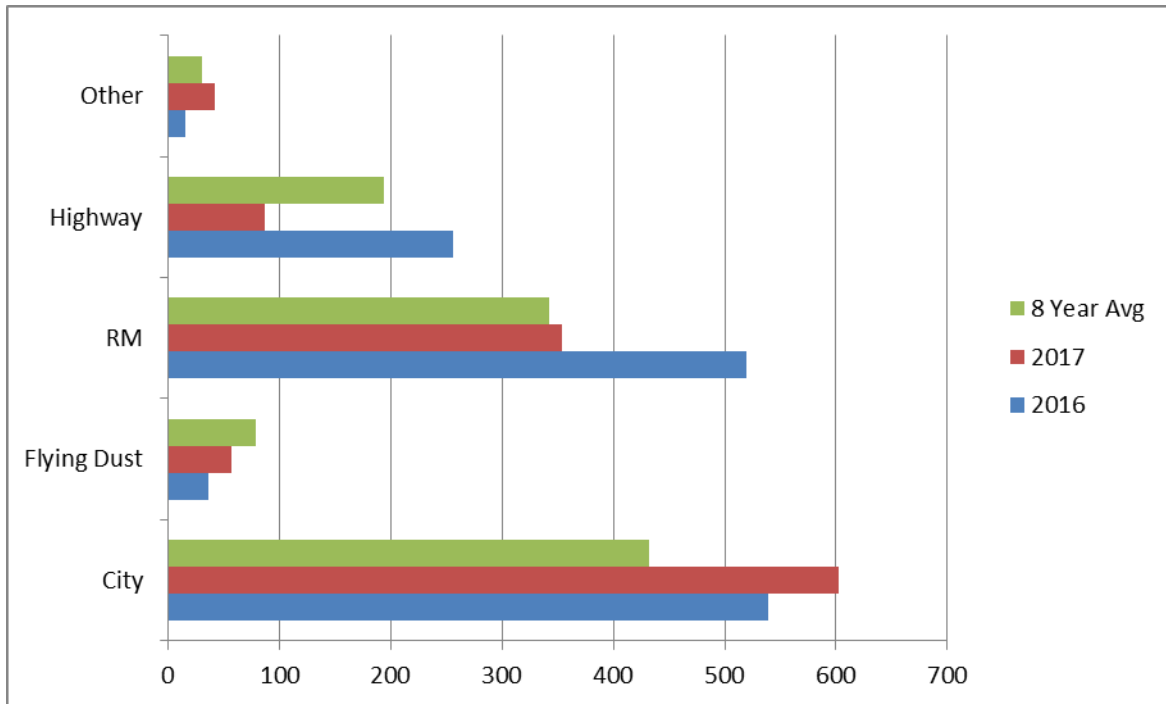
Calls per Year by Location



	Calls							
	2010	2011	2012	2013	2014	2015	2016	2017
Totals								
City	48	68	75	49	48	74	69	84
Flying Dust	7	7	7	5	5	4	5	4
RM	10	15	19	19	17	15	32	20
Highway	15	11	11	28	21	20	18	11
Other	1	5	0	7	2	7	6	4
	81	106	112	108	93	120	130	123

It is useful to consider the person-hours spent at incidents, as crew wages are a significant part of the cost of firefighting. Costs include not just wages paid to firefighters, but less tangible effects such as time away from firefighters' regular jobs.

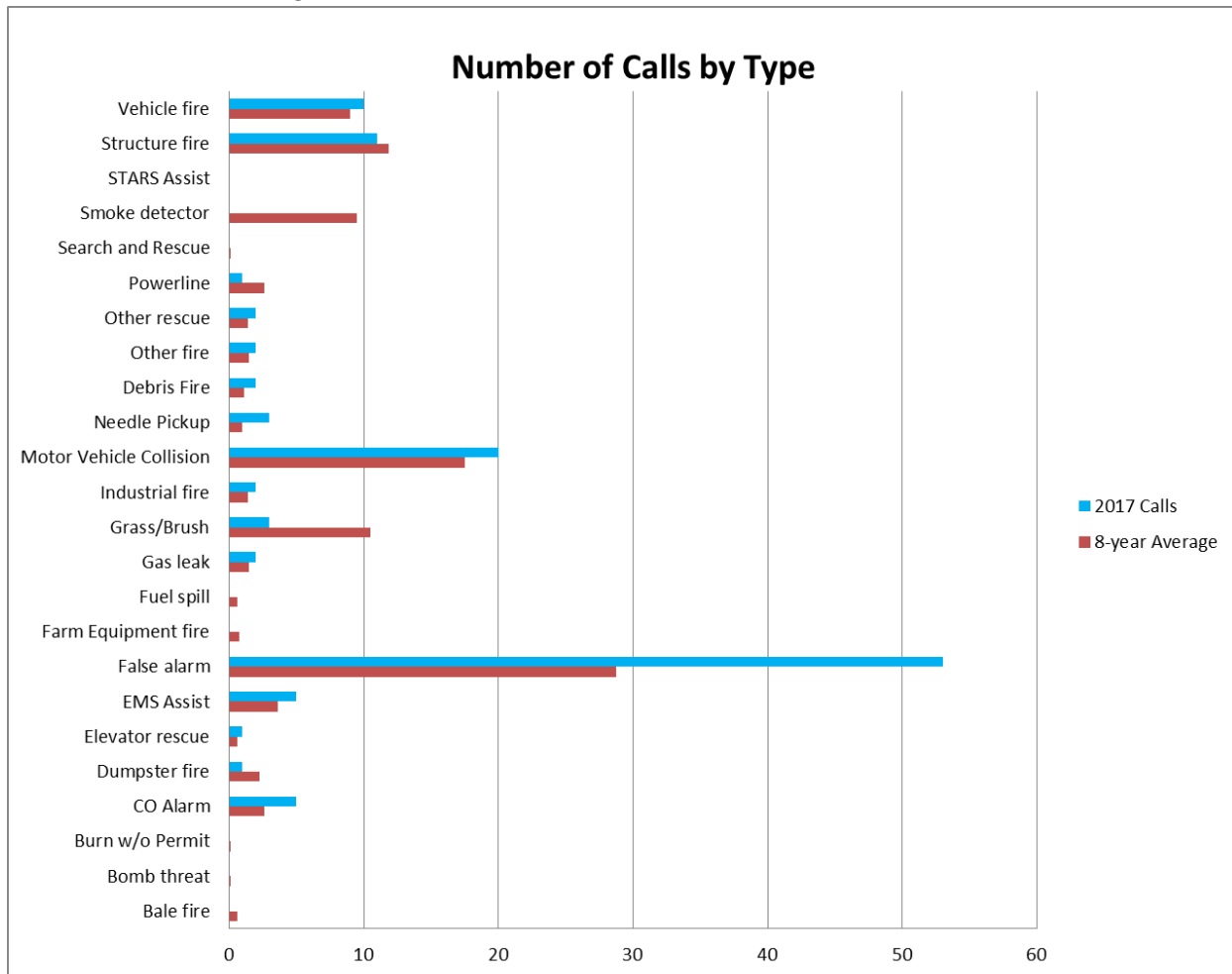
Crew Hours by Location



Crew hours								
Totals	2010	2011	2012	2013	2014	2015	2016	2017
City	389	449	528	298	284	364	539.5	603
Flying Dust	57	136	135	74	68.5	61	35.5	57
RM	288	169	272	570	308	261	519	354
Highway	124	134	94	383	248	222	256	87
Other	18	39	8	26	23	68	15	42
	876	927	1037	1351	931.5	976	1365	1143

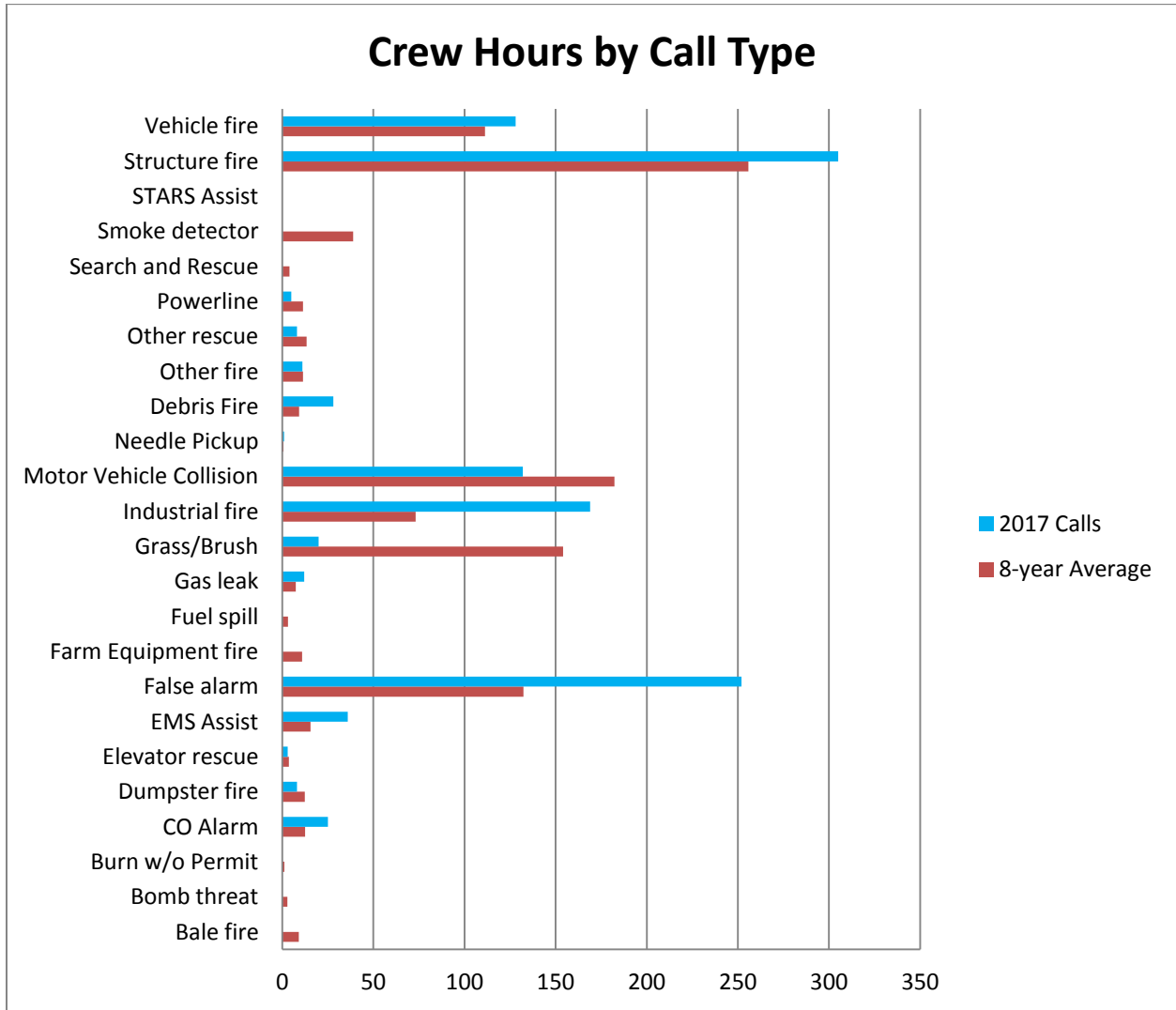
Historical note: The large spikes in hours in the RM in 2013 and 2016 are due to industrial fires. Similarly, the spike in highway numbers in 2013 is due to an unusual number of vehicle extrication calls, many of them involving transport trucks.

As the next chart shows, we respond to a wide variety of incident types. Structure fires, vehicle fires, wildland fires and motor vehicle rescues continue to be major demands for service.

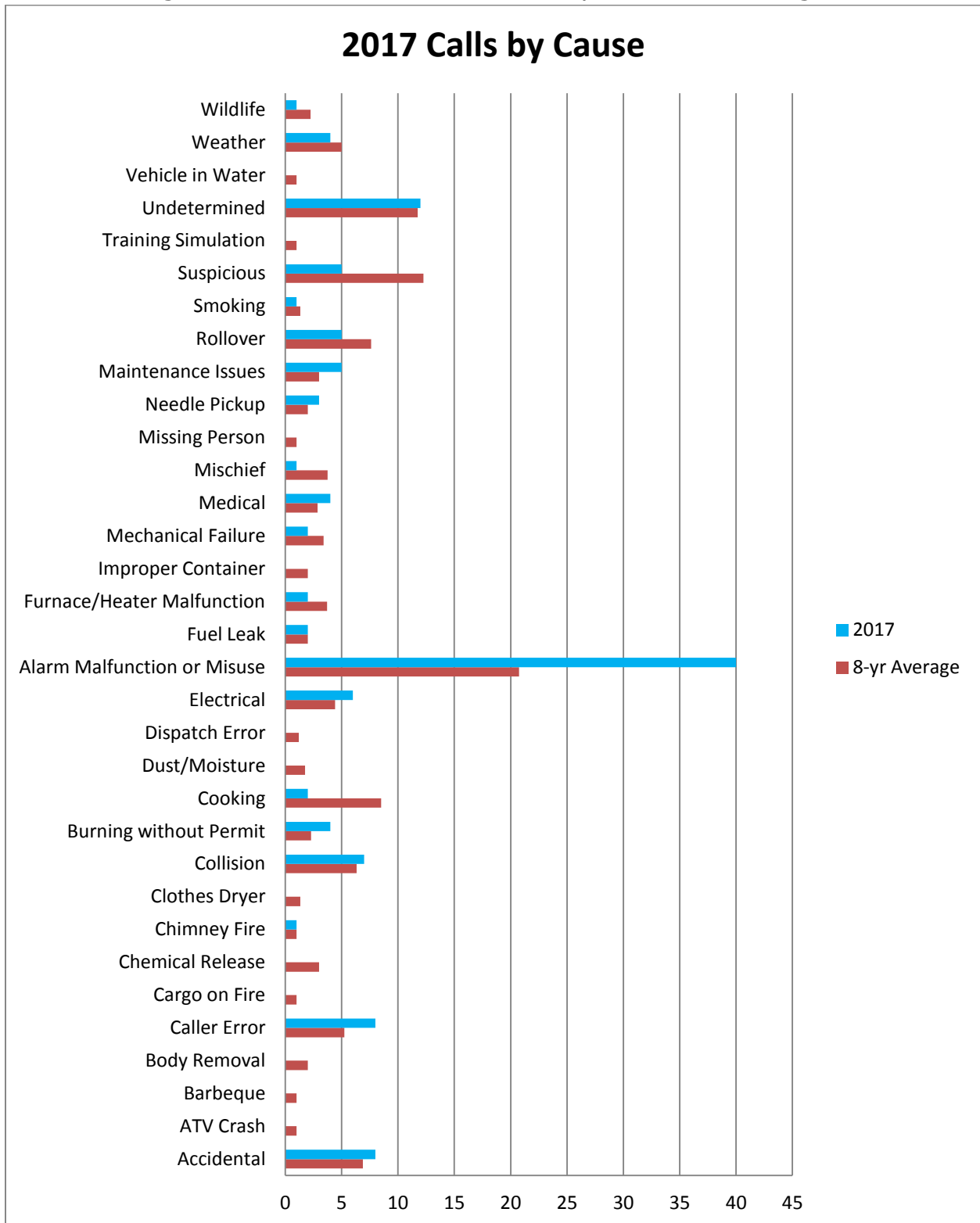


2017 saw an increase in “Alarms ringing” calls. While most turn out to be false alarms, they do require a response. Repeated false alarms result in fines, as provided by the bylaw. Most, however, are first-time false alarms. Common causes include monitoring company error, defective alarm equipment, and the occupants’ own unfamiliarity with their alarm system. First-time false alarm calls result in a warning letter, which includes instructions for preventing further false alarms. This seems to be effective, as there are few repeats. However, a public education campaign may be in order, to help prevent first occurrences as well.

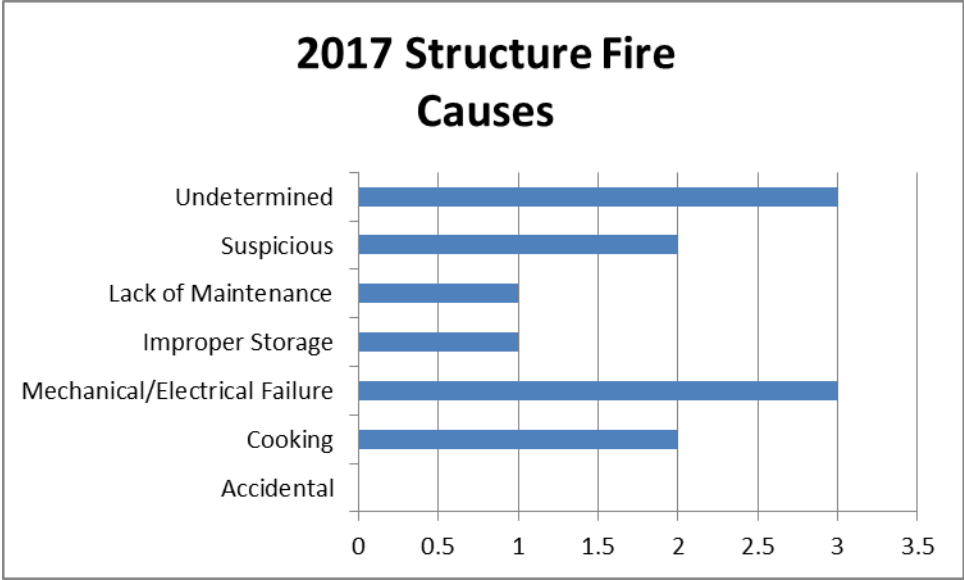
The labour cost of various types of incidents provides a different perspective. Structure fires, vehicle extrication, industrial fires and grass/brush fires are among the most labour-intensive types of calls.



Finally, determining the cause of fires and other emergencies provides valuable insight which can be used for future prevention strategies.



Malfunctioning or poorly maintained heating and electrical systems remain common causes of fires.



Providing Services that Meadow Lake Relies On

As the preceding information illustrates, the Fire Department is called to assist at a wide variety of incidents, not limited to putting out fires. We expect to be called on for any of the following events

Fire Department Services Currently Provided						
Service description	City	RM588	Flying Dust	Dorintosh	MLPP	Highways
Structure Fires	✓	✓	✓	✓	✓	
Vehicle Fires	✓	✓	✓	✓	✓	✓
Yard Fires	✓	✓	✓	✓	✓	
Farm Equipment Fires	✓	✓	✓	✓		
Grass/Brush Fires	✓	✓	✓	✓	✓	✓
Industrial Fires	✓	✓				
Alarms Ringing	✓	✓	✓	✓	✓	
Motor Vehicle Extrication	✓	✓	✓	✓	✓	✓
Farm Equipment Entanglement	✓	✓	✓	✓		
Industrial Equipment Entanglement	✓	✓				✓
Ice Rescue	✓	✓	✓		✓	✓
Other Specialty Rescue	✓	✓	✓	✓	✓	✓
Mass Casualty Incident	✓	✓	✓	✓	✓	✓
EMS Assist	✓	✓	✓	✓	✓	✓
RCMP Assist	✓	✓	✓	✓	✓	✓
Body recovery	✓	✓	✓	✓	✓	✓
Needle Pickup	✓					
Fuel Spill	✓	✓	✓	✓	✓	✓
Gas Leak	✓	✓	✓	✓	✓	
Hazardous Material Incident	✓	✓	✓	✓	✓	✓
Extreme Weather Event	✓	✓	✓	✓	✓	
Evacuation	✓	✓	✓	✓	✓	
Disaster Response, general	✓	✓	✓	✓	✓	✓
Fire Code Inspections	✓					
Firefighter Training	✓					
Public Education	✓	✓	✓	✓	✓	
Construction Plan Review	✓					
Other	✓	✓	✓	✓	✓	✓

Employers

The employers of our firefighters deserve recognition, and these include

City of Meadow Lake	Prairie North Health Region
Meadow Lake Co-op	Meadow Power & Equipment
Extra Foods	Department of Justice
Meadow Lake Mechanical Pulp	Meadow Lake OSB
Department of Highways	Northwest School Division
Thomas Funeral Home	Eagle Creek Motor Products
Hercules Appliance Repair	

Several firefighters are self-employed

While most firefighters reside in the City, many are employed elsewhere

The support of community-minded employers is invaluable. An effective fire service is possible only when employees can leave work, without penalty, to attend to emergencies in the community.

Meadow Lake's Firefighters

The crew roster, at the time of this writing, is:

Officers

Neil Marsh, Fire Chief	Joe Grela, Deputy Chief
Doug Bennett, Assistant Deputy	Michael Wagner, Lieutenant
Kim Sawatzky, A-Crew Captain	Ian Kosokowsky, Lieutenant
Chris Warren, B-Crew Captain	Cheryl Dodds, Lieutenant
Rick Burnett, C-Crew Captain	Scott Chuckrey, Lieutenant
Frank Richardson, Lieutenant	Dustin Thomas, Lieutenant

Firefighters

Yannis Karambetsos		
Chris Gill	Ashton Filkowski	Peter Schalm
Joe Hallahan	Lyndon Shryko	Keenan Gill
Christine Sawatzky	Alexander Bose	Andrew Toews
Andrew Clements	Arron Toews	Macylin Relitz

Qualifications

Among our membership we currently have

First Aid instructors

First Responder/EMR instructors

Fire Service Instructors, Levels 1 & 2

Firefighter II professional qualifications (NFPA 1001)

Driver/Operator professional qualifications (NFPA 1002)

HazMat Operations-level responders (NFPA 472)

Fire Investigators (NFPA 1033)

Fire Inspectors (NFPA 1031)

Paramedics

First Responders & Emergency Medical Responders

Ice Rescue technicians

Search and Rescue practitioners

And a wide variety of other skills, certifications and competencies



Our Fleet

- **First-line Pumper:** 2016 Fort Garry International fire engine, which carries 1000 gallons of water, 1050 GPM fire pump, Class A foam system, a 6-person crew, SCBA, ground ladders and other equipment. This new truck joined our fleet in July 2017, and replaced the 1987 fire engine which had suffered a serious breakdown.
- **Second-line & Rural Pumper:** 1999 Fort Garry Sterling fire engine, which carries 900 gallons of water, 1050 GPM fire pump, Class A foam system, a 5-person crew, SCBA, ground ladders and other equipment
- **Highway Rescue:** 2000 GMC 1-ton with custom box, which carries a 5-person crew, our hydraulic rescue tools ('Jaws of Life'), scene lighting, basic rope rescue gear and other equipment
- **Rapid Response:** 2015 Ford 1-ton mini-pumper, which carries 200 gallons of water, an 80GPM pump with foam capability, SCBA, spill control supplies and assorted tools. This unit responds to most calls
- **Tanker:** 2015 Fort Garry International, with 3000 gallon capacity and 500GPM fire pump, delivered in May of 2016. Used in areas where hydrant service is inadequate, including significant parts of the city as well as the wider response area
- **Utility:** 2003 Ford ambulance, donated in 2011 by the Prairie North Health Region. This carries most of our first aid equipment and is used as a support vehicle at numerous incidents
- **Chief's vehicle:** 2005 GMC pickup, used by the fire chief for weekday work, and by the chief or on-call officer for after-hours on-call duties. Carries tools and supplies for inspections, incident command, and fire investigations.

Disaster Management

We are pleased to have the opportunity to work with Anne Danielson, our Emergency Planning consultant, over the next two years. We hope to see many improvements, as a result, in the community's ability to respond effectively to, and recover quickly from, any foreseeable large-scale events. This effort will require the time and talents of a great many people from many different organizations and agencies.

In summary, I would like to express my appreciation to the firefighters and officers of the Meadow Lake Fire Department, and especially to their families and employers.

With the continued support of City Council and the citizens of Meadow Lake and surrounding communities, we will ensure that our fire department continues to provide the vital services that the public depends on.

Respectfully submitted,

Neil Marsh
Fire Chief